

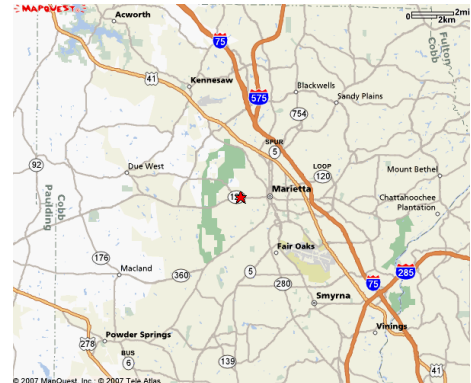
Property Type: Office Condominium 701 Whitlock Avenue – K48 Marietta, GA 30064

FOR LEASE



Whitlock Park Professional Center

- For Lease 1316 s.f.
- New Carpet and Paint
- All Amenities Located Nearby
- Park at Your Front Door
- Ready for immediately Occupancy
- Whitlock Avenue and Manning Road



Dan Decraene
Advance Realty Service, Inc.

dan1@advance1.com www.advancerealty.net
Tel. (770) 220- 2626 Fax (770) 220 -2606

PHOTOS

*701 Whitlock Avenue – K48
Marietta, GA 30064*

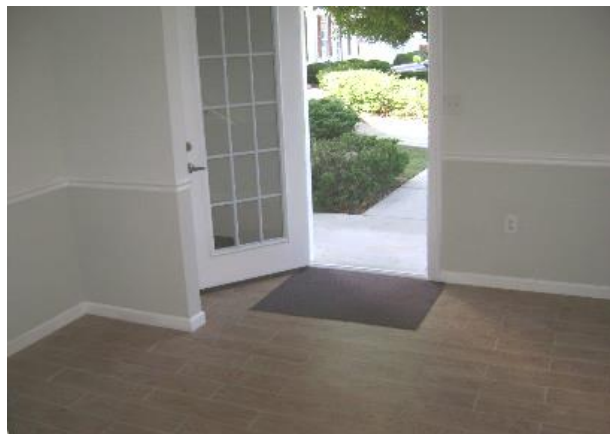


3

MORE PHOTOS

701 Whitlock Avenue – K48

Marietta, GA 30064



Information contained herein has been obtained from the owner of the property or other sources we deem reliable. We have no reason to doubt its accuracy, but we do not guarantee it.

EXECUTIVE SUMMARY

701 Whitlock Avenue – K48

Marietta, GA 30064

Size	1,316 s.f. – on the second floor of a gorgeous two story office condominium
Lease Price	\$13.50 s.f. - full service except janitorial
Age	Built in 1998
Zoning	Property is zoned CRC, Community Retail Commercial
Utilities	All utilities are available to the site
Parking Ratio	4 spaces per 1,000 s.f.

Dan Decraene

Advanced Realty Service, Inc.

770-220-2626

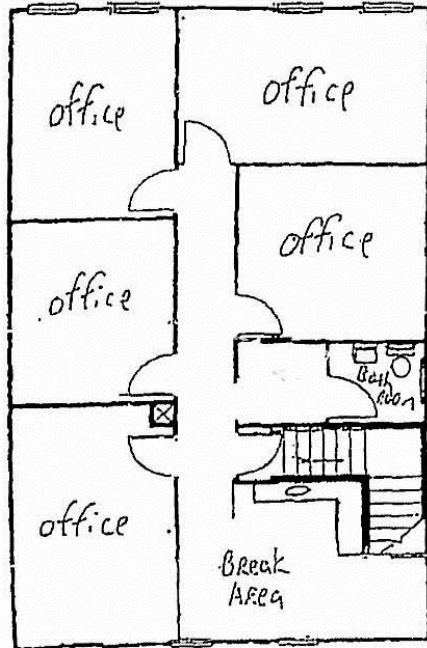
dan1@advance1.com

www.advancerealty.net

FLOOR PLAN

701 Whitlock Avenue – K48

Marietta, GA 30064



2nd Floor

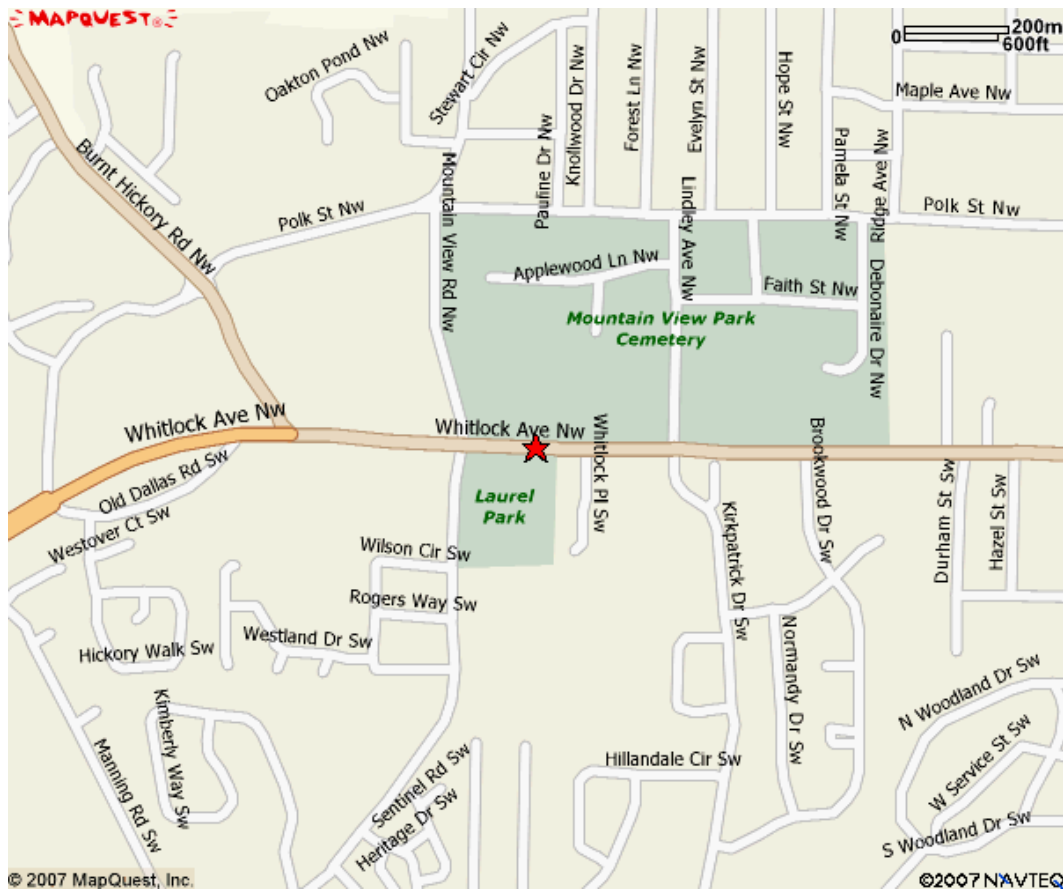
Dan Decraene
Advanced Realty Service, Inc.
770-220-2626

dan1@advance1.com

www.advancerealty.net

LOCATION

701 Whitlock Avenue – K48
Marietta, GA 30064



Dan Decraene
Advanced Realty Service, Inc.
770-220-2626

dan1@advance1.com

www.advancerealty.net